

PUMP BEARING SUPPORTS

GROUP 1 BEARING SUPPORT.....	307
GROUP 2 BEARING SUPPORT.....	307
GROUP 2 BEARING SUPPORT REINFORCED.....	308
GROUP 2 BEARING SUPPORT REINFORCED.....	308
GROUP 3 BEARING SUPPORT REINFORCED.....	309
GROUP 3 BEARING SUPPORT.....	309
GROUP 3 BEARING SUPPORT SAE A.....	310
GROUP 3 BEARING SUPPORT SAE B 2 BOLT.....	310

GROUP 3.5 BEARING SUPPORT.....	311
GROUP 2 BEARING SUPPORT BOSCH.....	311
GROUP 3 BEARING SUPPORT BOSCH.....	312
GROUP 2 BEARING SUPPORT BOSCH.....	312
GROUP 2 BEARING SUPPORT.....	313
GROUP 4 BEARING SUPPORT.....	314
FLANGES FOR GROUP 4 BEARING SUPPORTS.....	315
GROUP 3 CAST IRON BEARING SUPPORT.....	316

Pump bearing supports designed for independent drives of hydraulic pumps via chains, belts, gears with high radial loads.

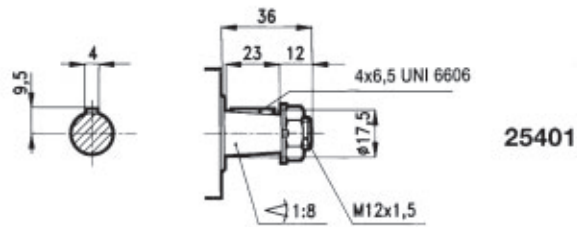
They are directly flanged onto the pump via splined half-couplings.

The life of the bearing supports is 3500 hours at 15000 rpm.

Grease according to DIN 51502 standard MPF 1K-20.

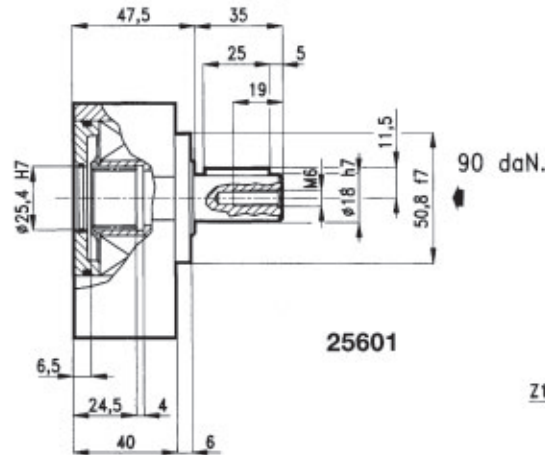
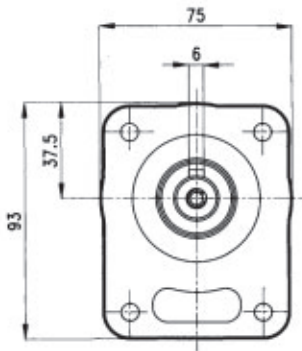


GROUP 1 BEARING SUPPORT

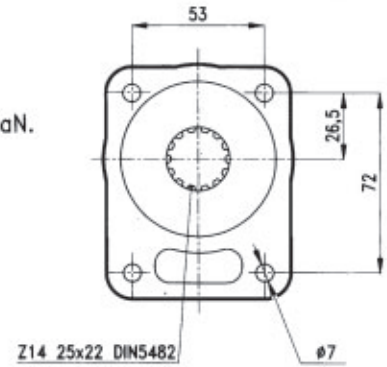


25401

100 daN.
 ➔ 75 daN.

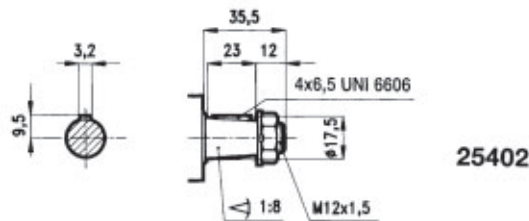


25601



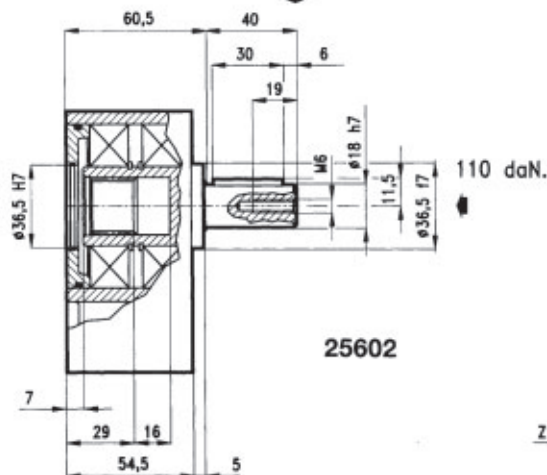
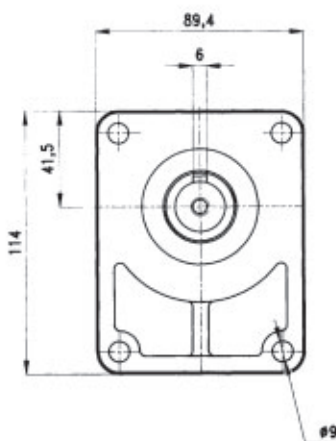
PART NO.	DESCRIPTION
23 - 25401	Pump Bearing Support gr.1 tapered shaft
24 - 25601	Pump Bearing Support Support gr.1 cylindrical shaft

GROUP 2 BEARING SUPPORT

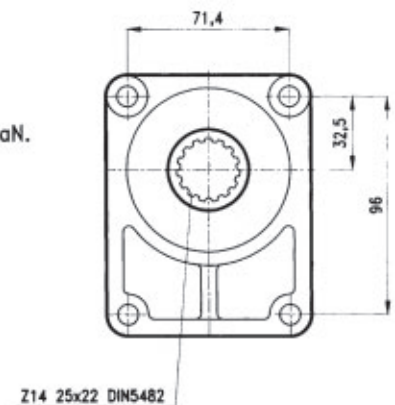


25402

170 daN.
 ➔ 130 daN.

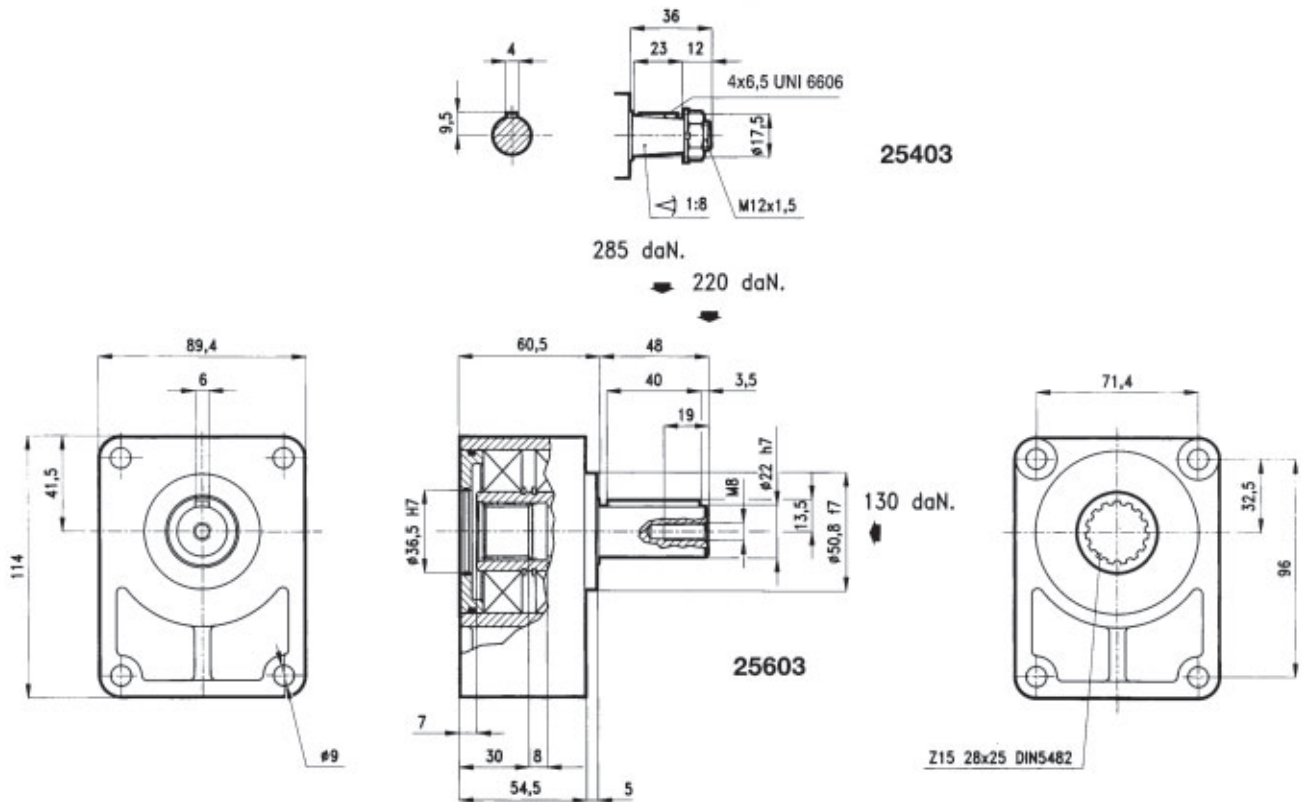


25602



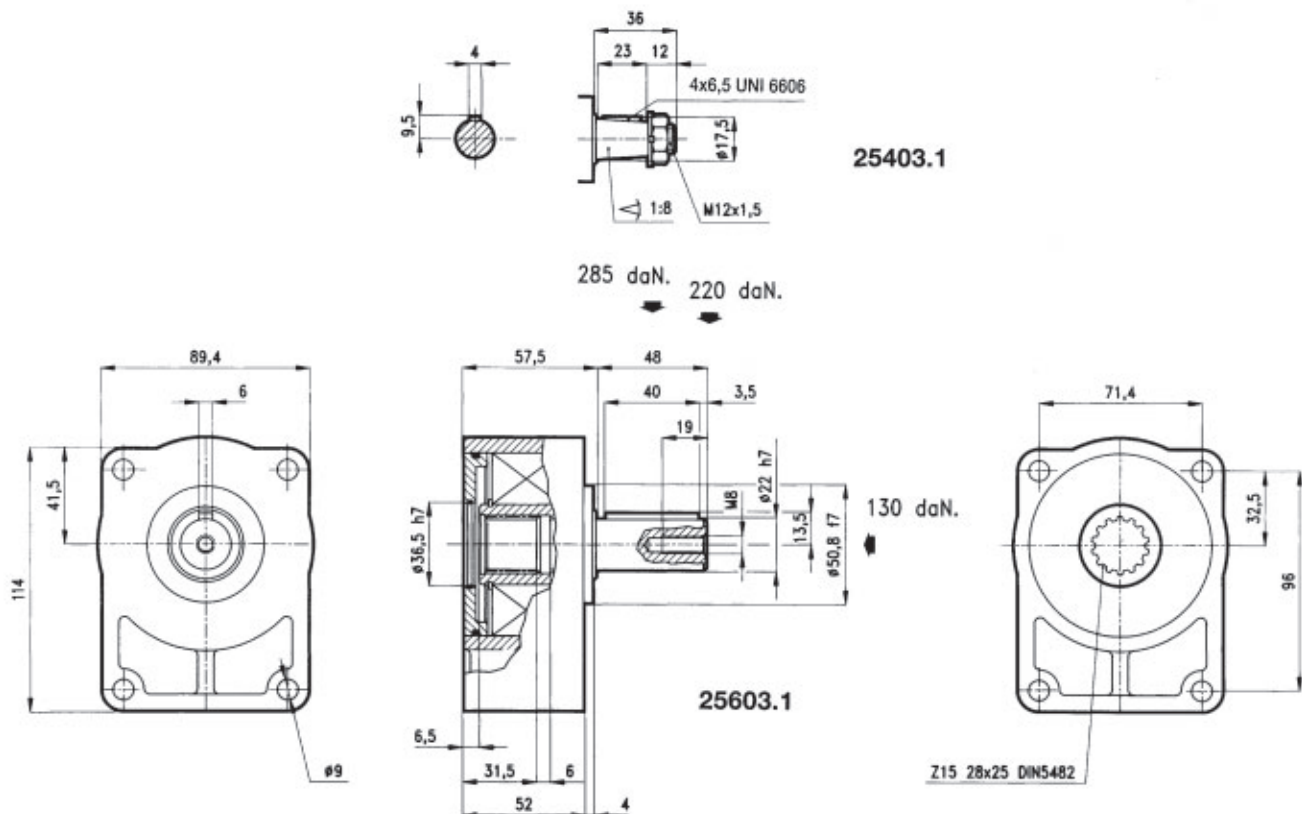
PART NO.	DESCRIPTION
23 - 25402	Pump Bearing Support gr.2 tapered shaft
24 - 25602	Pump Bearing Support gr.2 cylindrical shaft

GROUP 2 BEARING SUPPORT REINFORCED



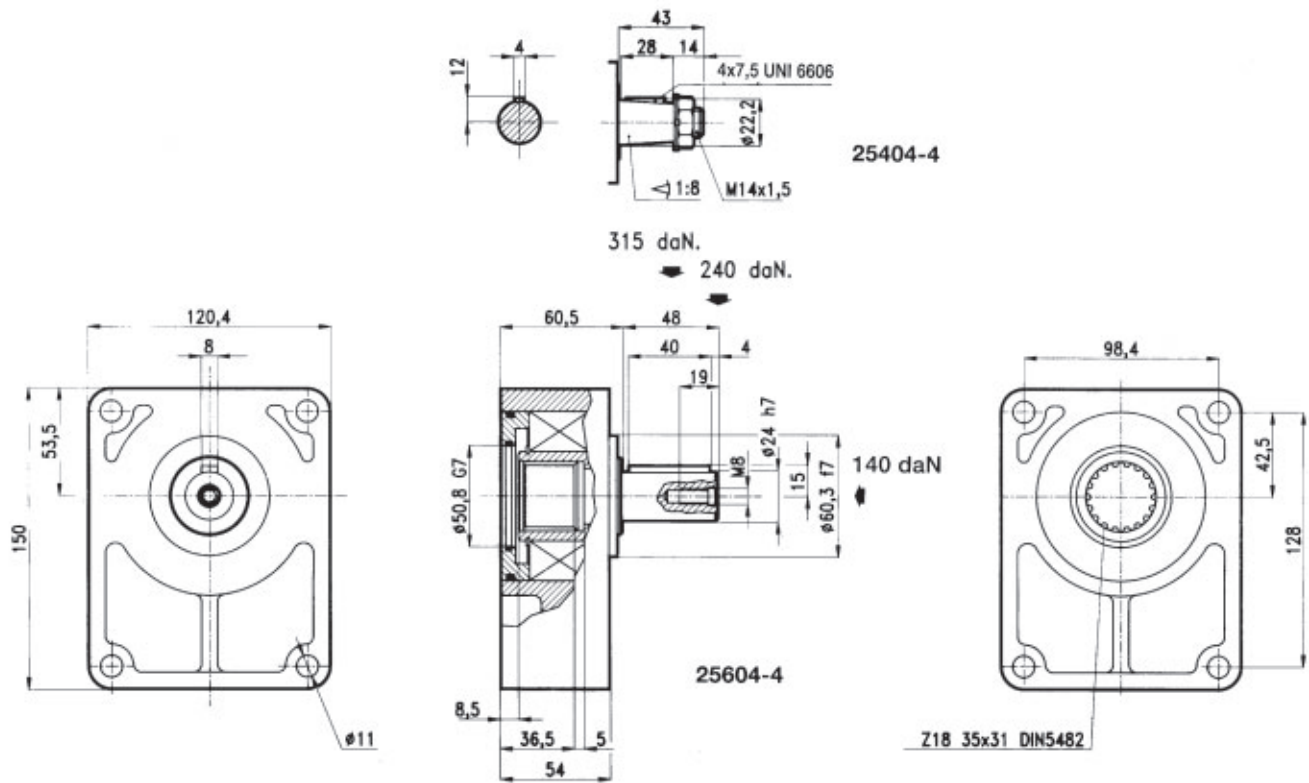
PART NO.	DESCRIPTION
23 - 25403	Pump Bearing Support gr.2/R tapered shaft
24 - 25603	Pump Bearing Support gr.2/R cylindrical shaft 2 bearings

GROUP 2 BEARING SUPPORT REINFORCED



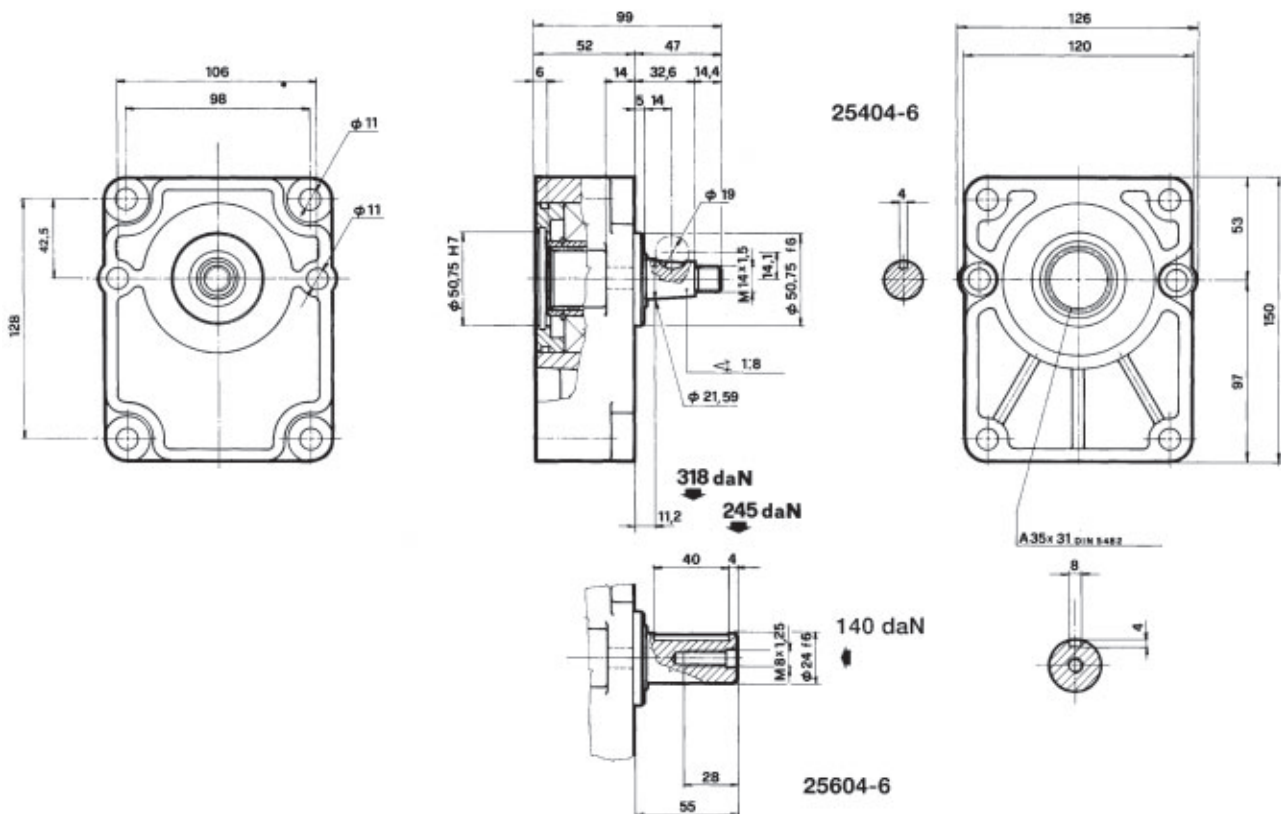
PART NO.	DESCRIPTION
23 - 25403-1	Pump Bearing Support gr.2/R tapered shaft key 3,2
24 - 25603-1	Pump Bearing Support gr.2/R cylindrical shaft 1 bearing

GROUP 3 BEARING SUPPORT REINFORCED



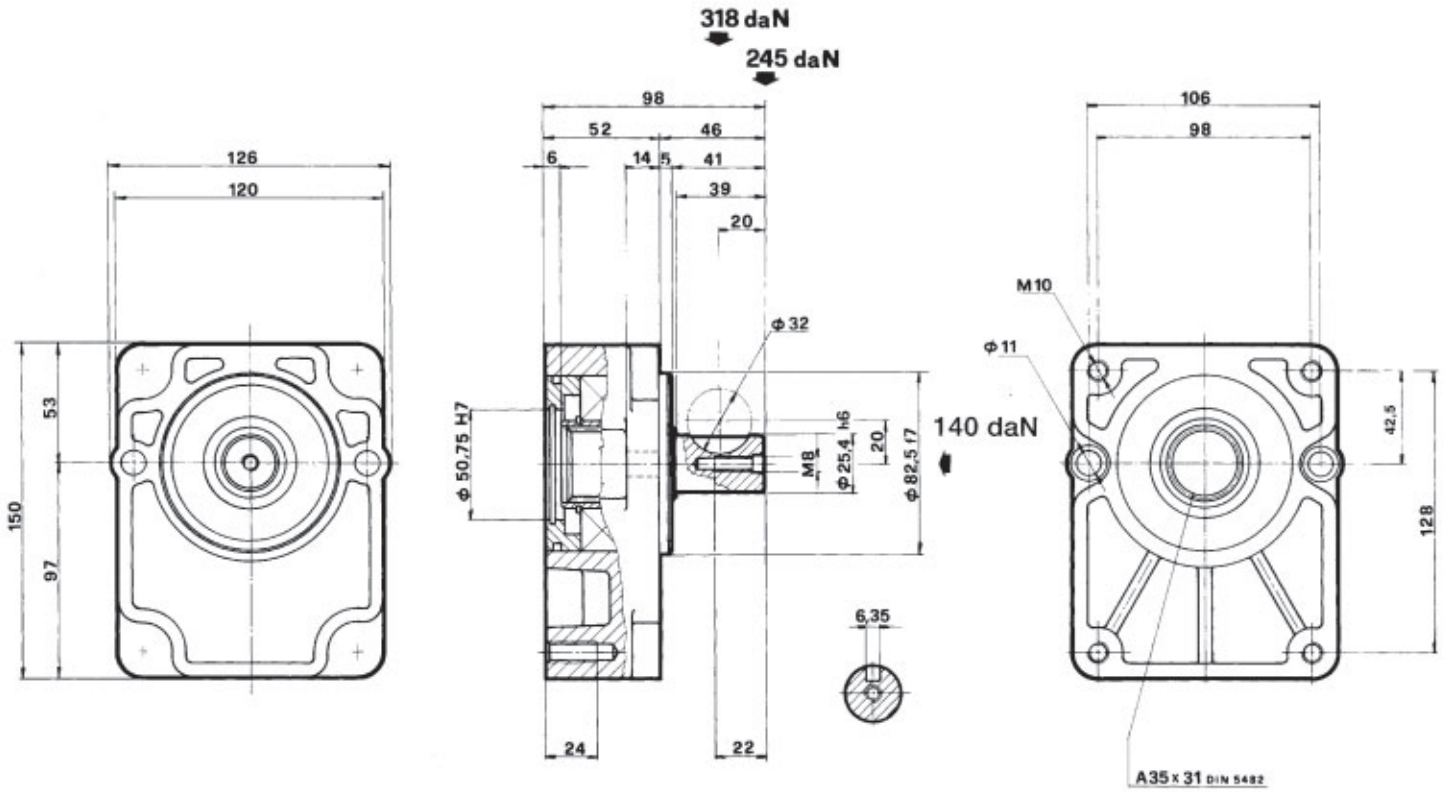
PART NO.	DESCRIPTION
23 - 25404-4	Pump BearingSupport gr.3 tapered shaft 4 holes
24 - 25604-4	Pump Bearing Support gr.3 cylindrical shaft 4 holes

GROUP 3 BEARING SUPPORT



PART NO.	DESCRIPTION
23 - 25404-6	Pump Bearing Support gr.3 tapered shaft 4 holes
24 - 25604-6	Pump Bearing Support gr.3 cylindrical shaft 6 holes

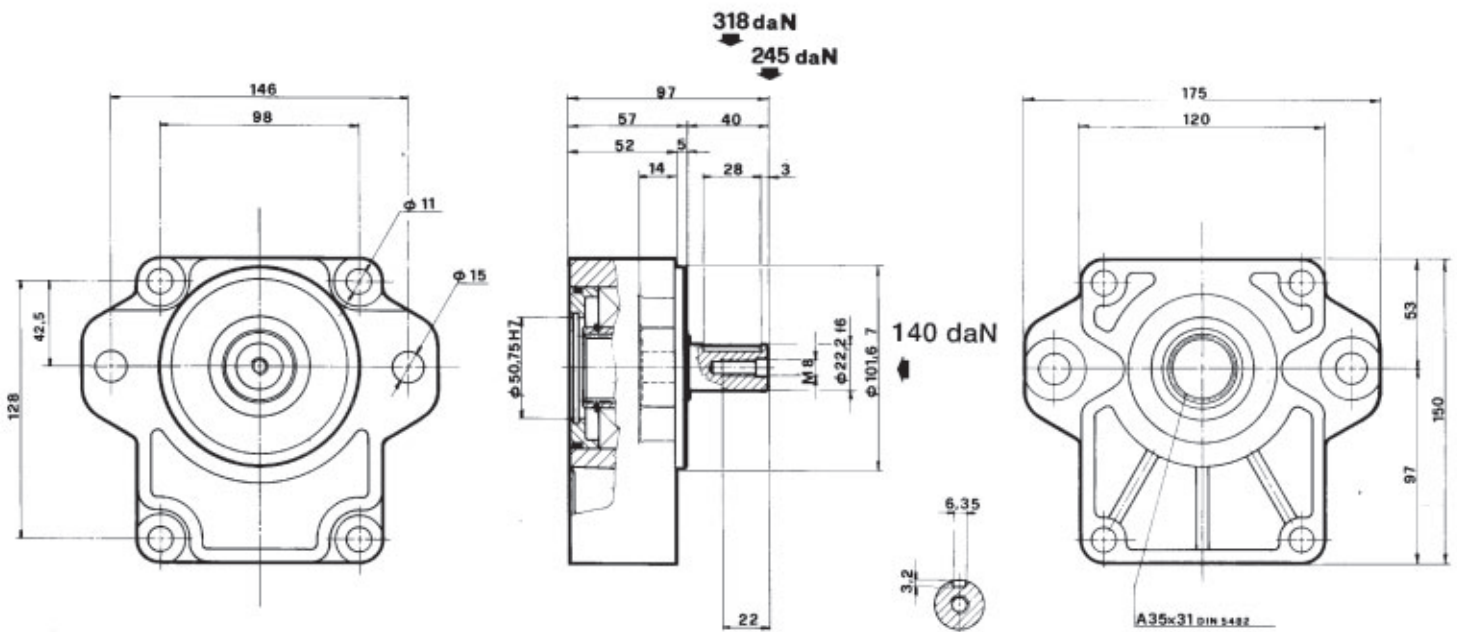
GROUP 3 BEARING SUPPORT SAE A



25607

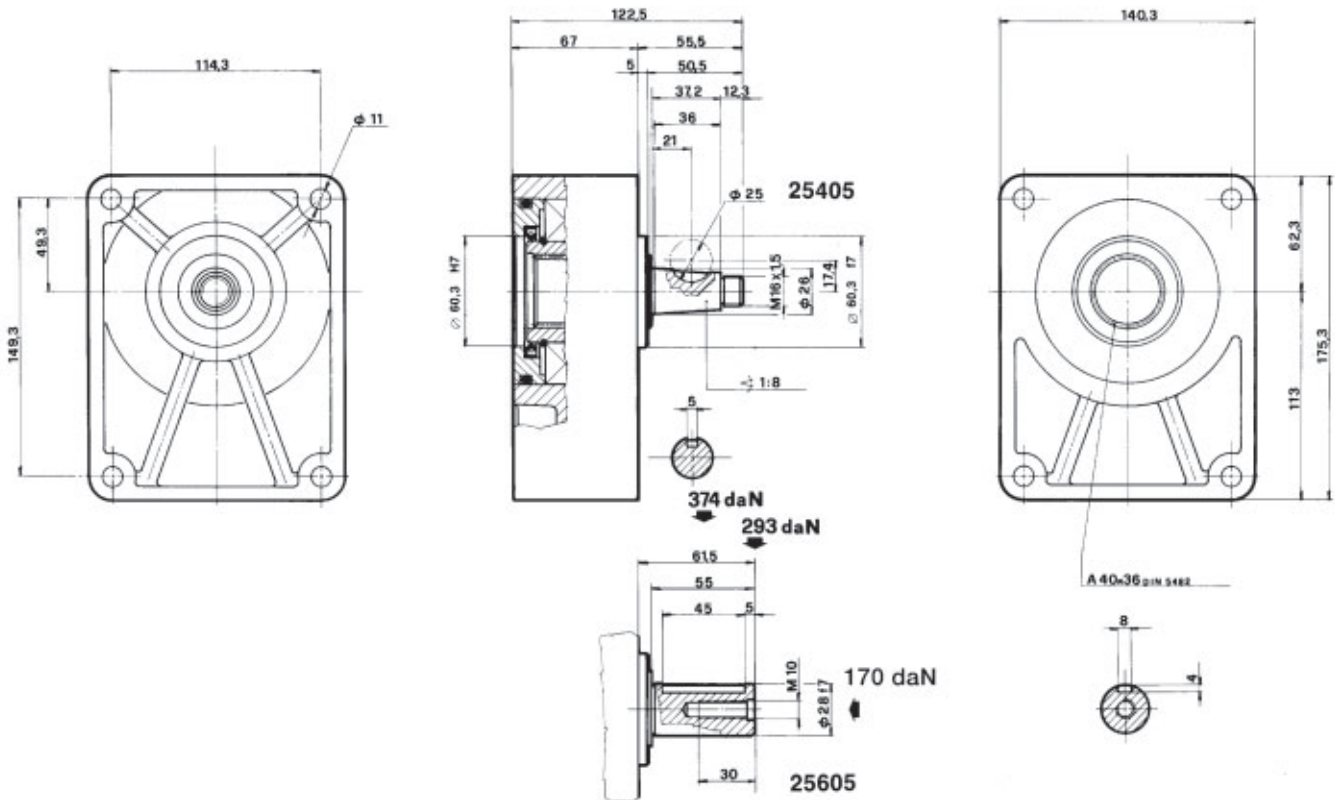
PART NO.	DESCRIPTION
24 - 25607	Pump BearingSupport gr.3 SAE A cylindrical shaft

GROUP 3 BEARING SUPPORT SAE B 2 BOLT



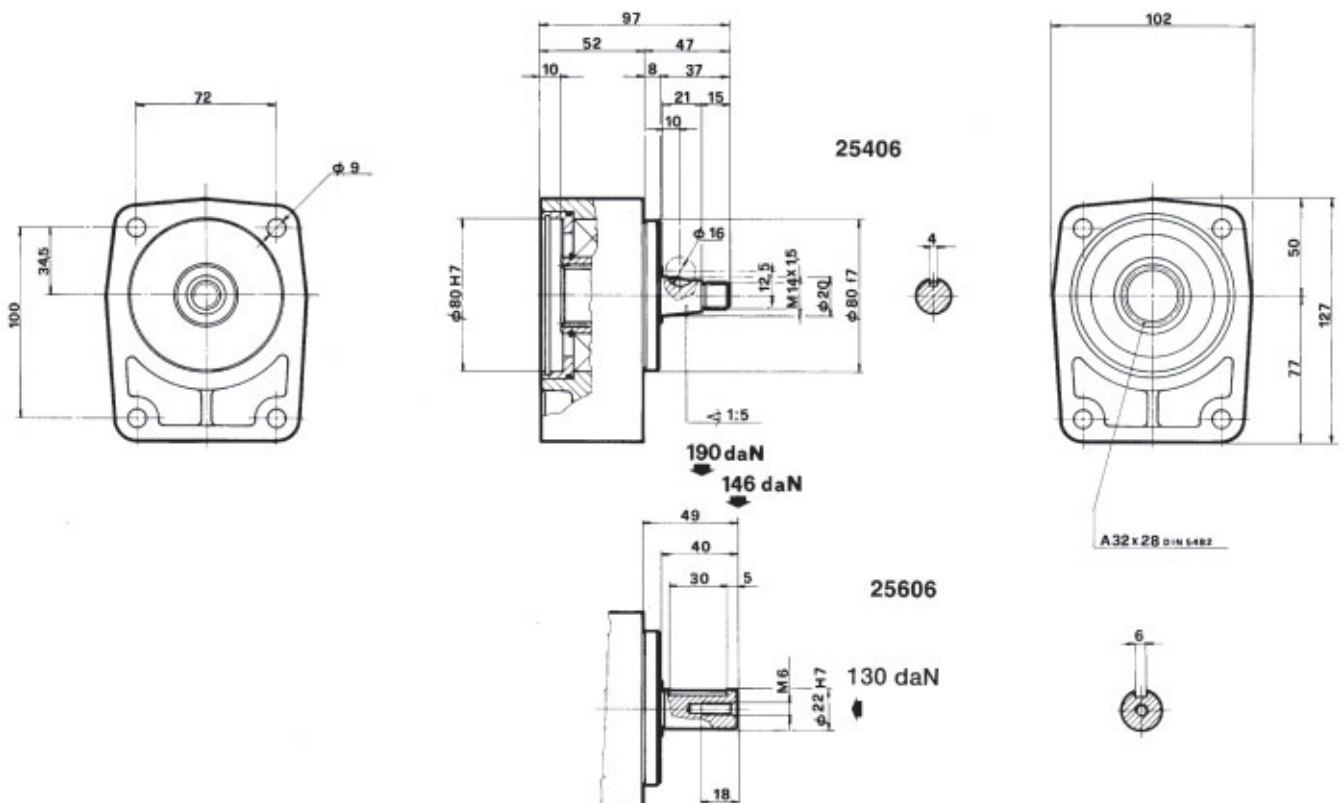
PART NO.	DESCRIPTION
24 - 25608	Pump Bearing Support gr.3 SAE B cylindrical shaft

GROUP 3.5 BEARING SUPPORT



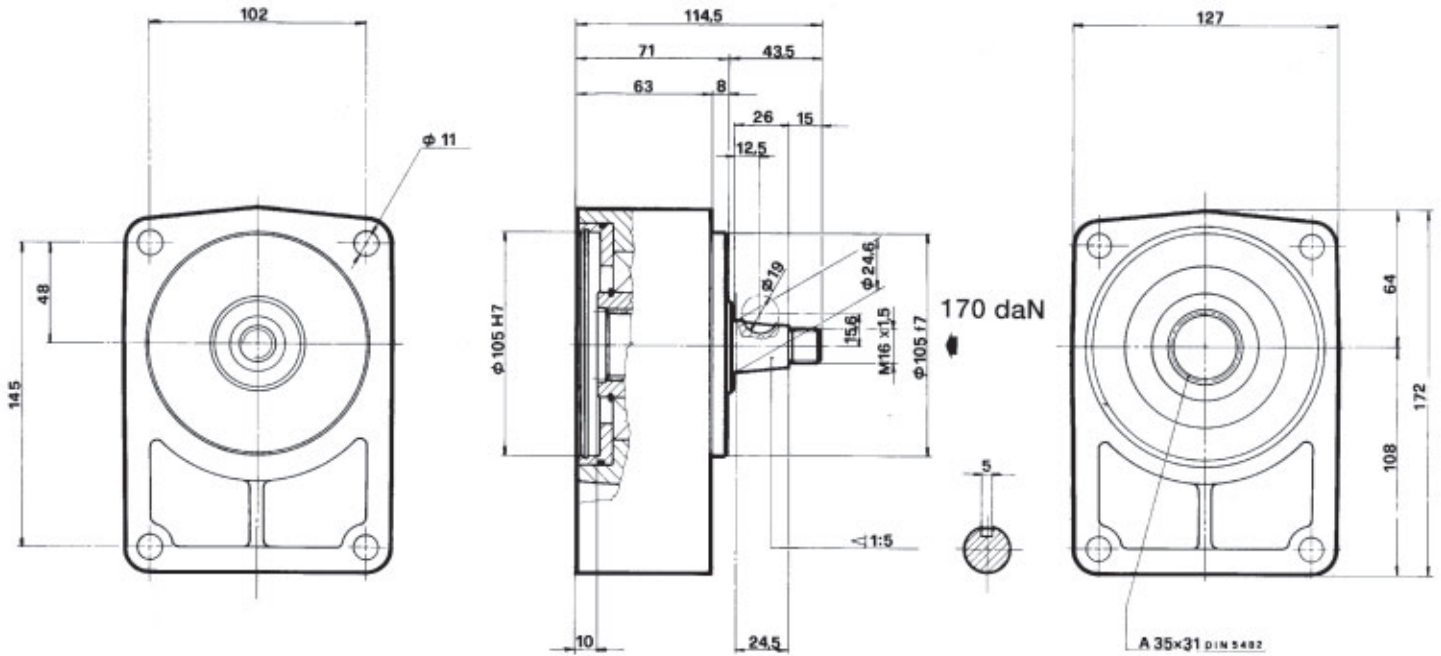
PART NO.	DESCRIPTION
23 - 25405	Pump Bearing Support gr.3,5 tapered shaft
24 - 25605	Pump BearingSupport gr.3,5 cylindrical shaft

GROUP 2 BEARING SUPPORT BOSCH



PART NO.	DESCRIPTION
23 - 25406	Pump Bearing Support gr.2 Bosch tapered shaft
24 - 25606	Pump BearingSupport gr.2 Bosch cylindrical shaft

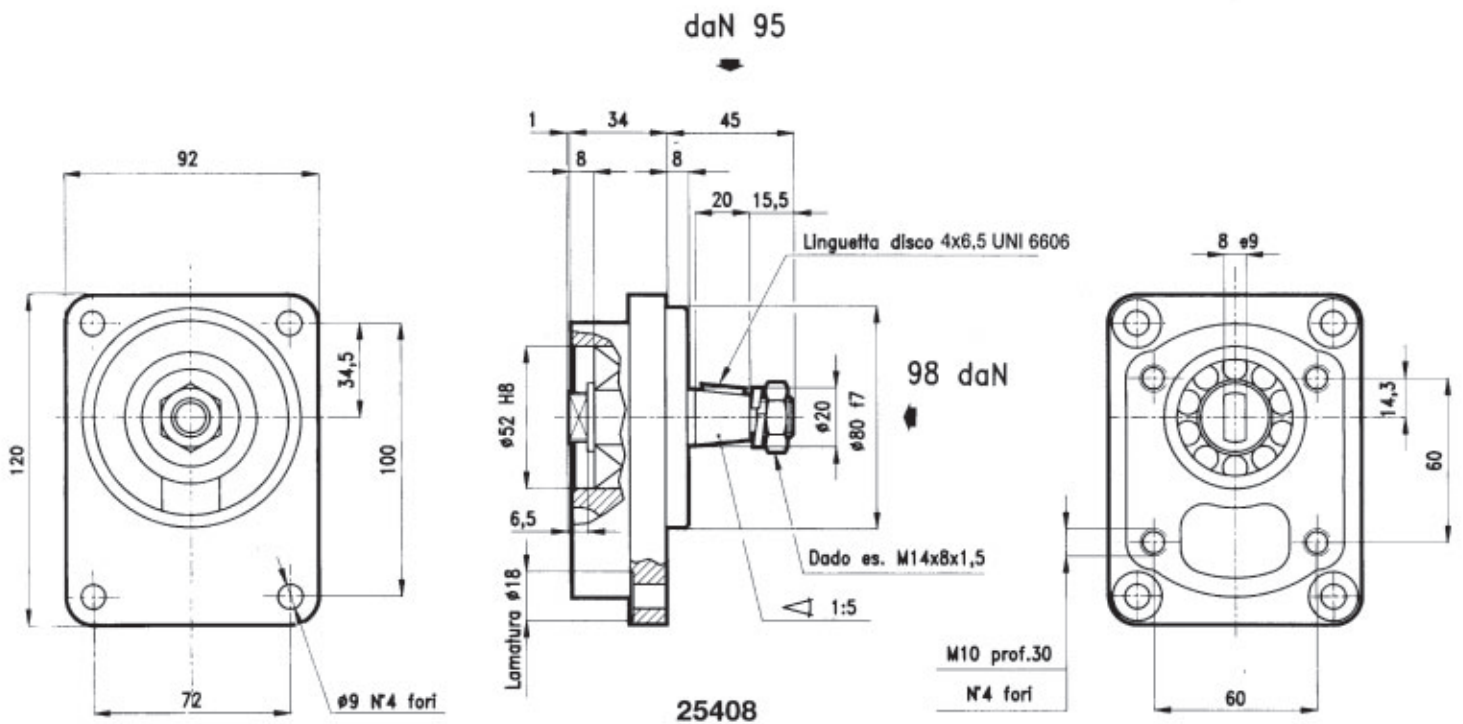
GROUP 3 BEARING SUPPORT BOSCH



25407

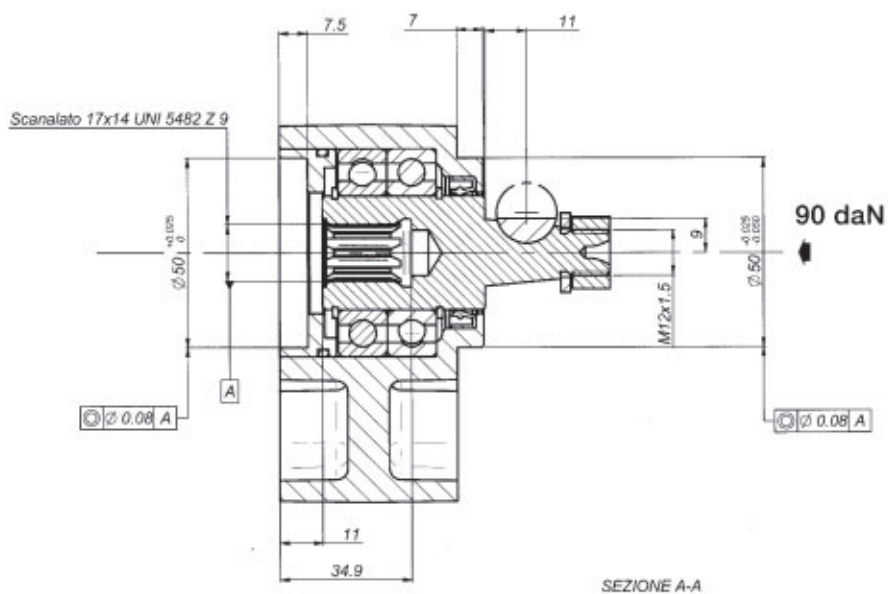
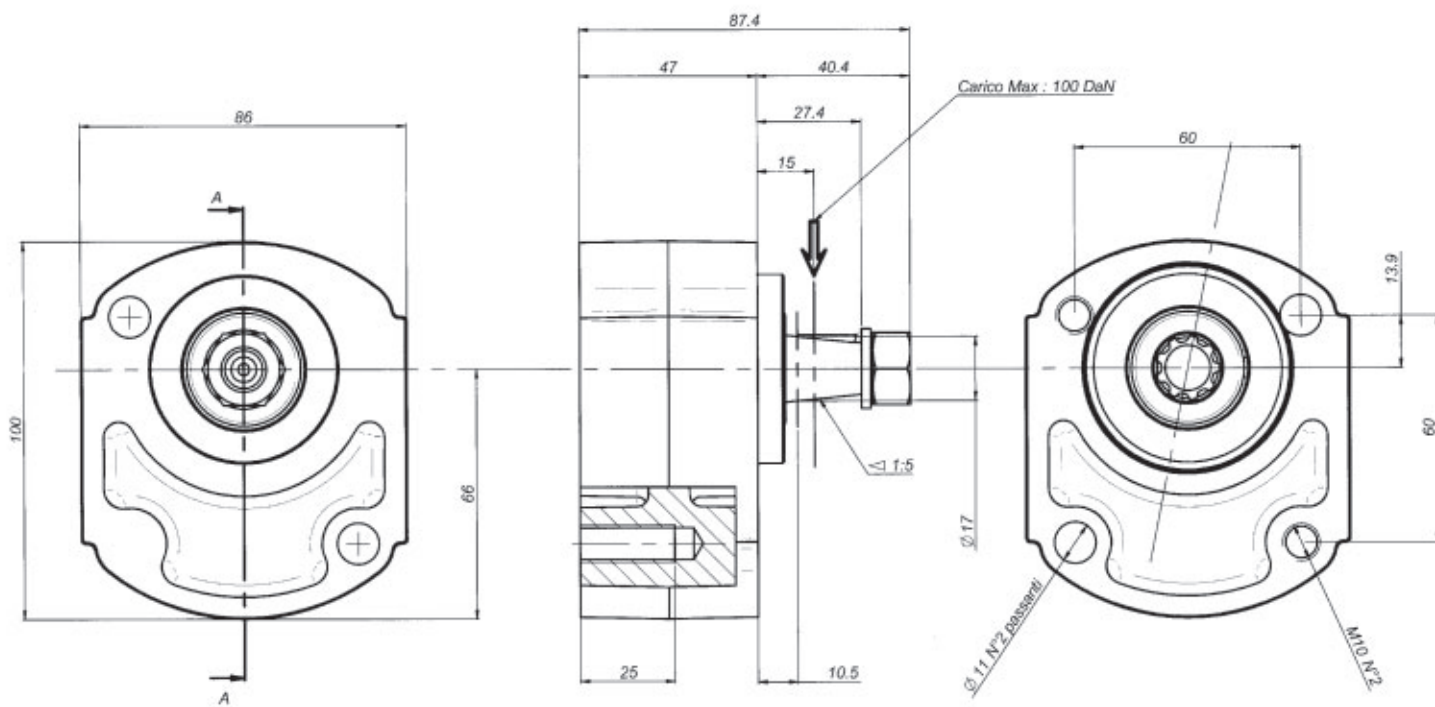
PART NO.	DESCRIPTION
23-25407	Pump Bearing Support Bosch tapered shaft

GROUP 2 BEARING SUPPORT BOSCH



25408

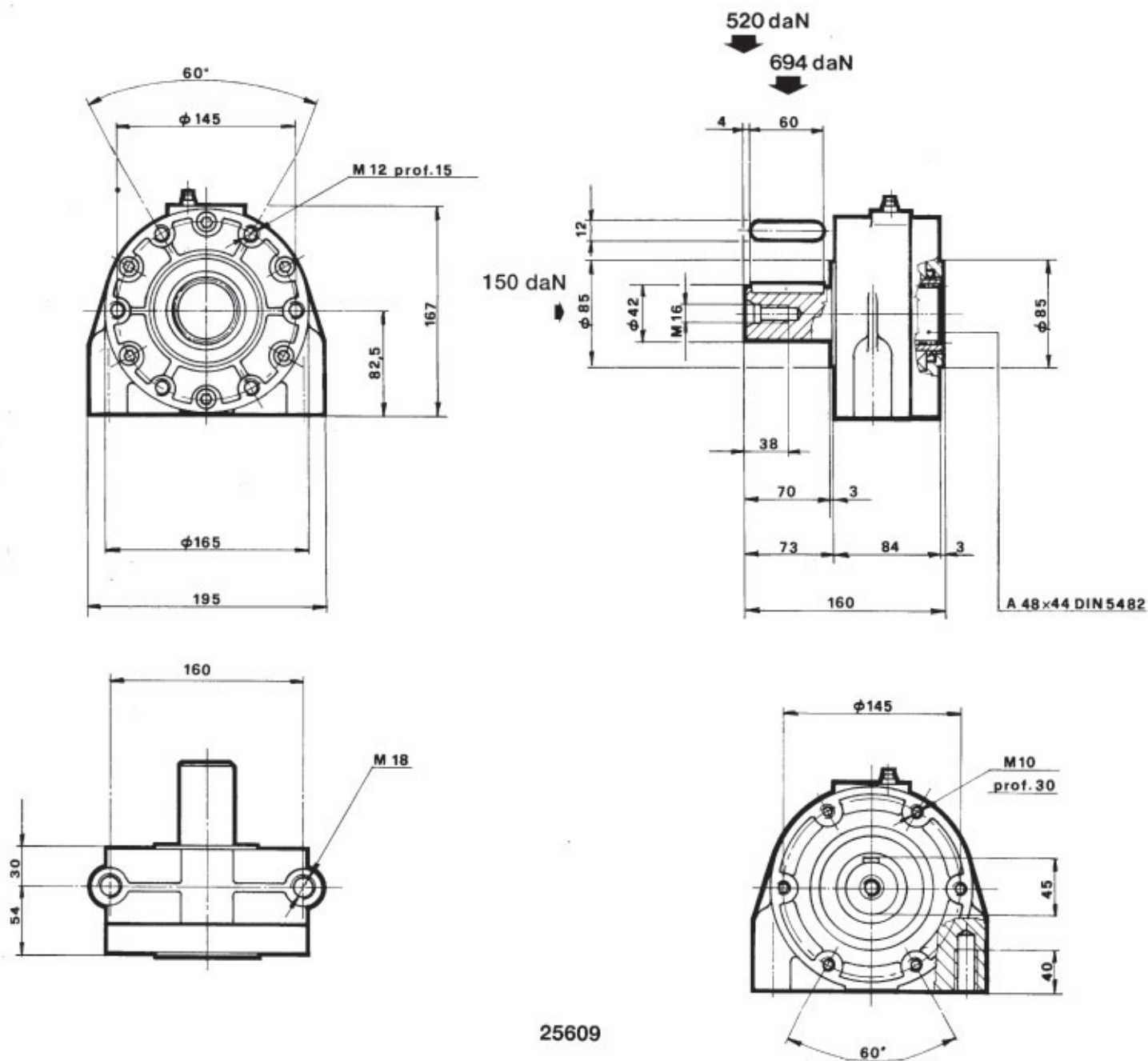
PART NO.	DESCRIPTION
23 - 25408 Pump	Bearing Support gr.2 SUI 52-80



25409

SEZIONE A-A

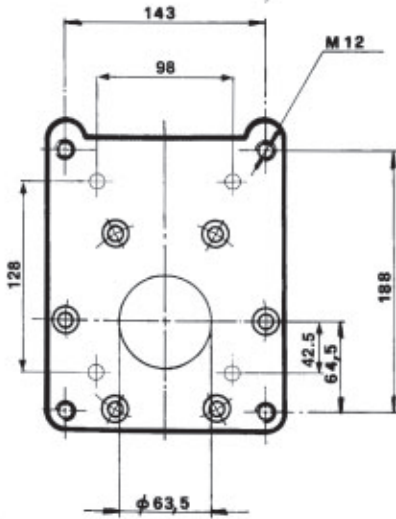
PART NO.	DESCRIPTION
23 - 25409	Pump BearingSupport gr.2 T54B5 B17X14



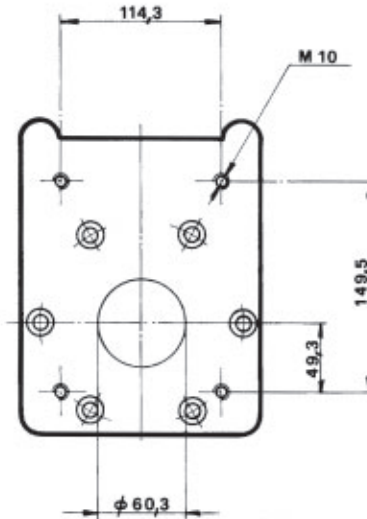
25609

PART NO.	DESCRIPTION
24 - 25609	Pump Bearing Support gr.4

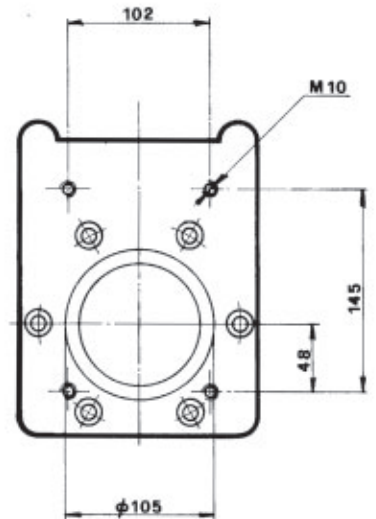
FLANGES FOR GROUP 4 BEARING SUPPORTS



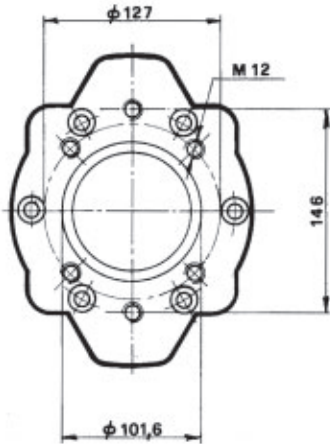
4 P 30403
3 P 30401



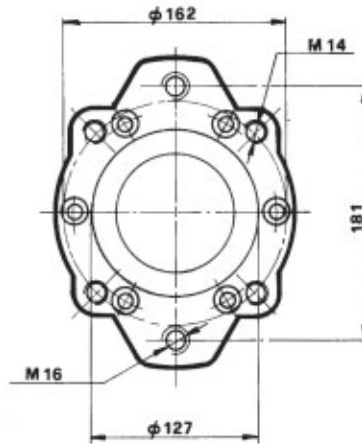
3,5 P 30402



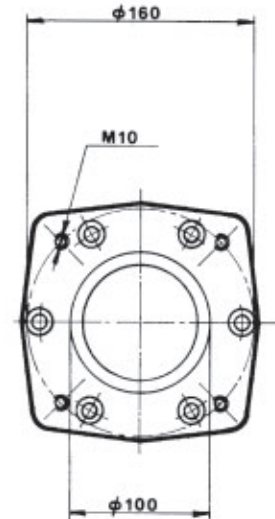
Bosch ZG3 30417



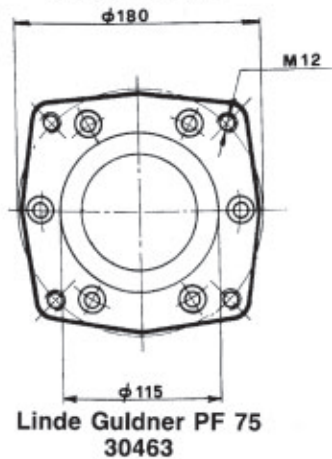
SAE B 2-4 fori
30421 - 30422



SAE C 2-4 fori
30431 - 30432



Linde Guldner PF 20-35-50
30461 - 30462



Linde Guldner PF 75
30463

PART NO.	DESCRIPTION	
28 - 30401	Flange gr.3+socket capscrews	
28 - 30402	Flange gr.3,5+socket capscrews	
28 - 30403	Flange gr.4+socket capscrews	
28 - 30417	Flange gr.3 Bosch+socket capscrews	
28 - 30420	Flange SAE A 2 holes+socket capscrews	
28 - 30421	Flange SAE B 2 holes+socket capscrews	
28 - 30422	Flange SAE B 4 holes+socket capscrews	
28 - 30431	Flange SAE C 2 holes+socket capscrews	
28 - 30432	Flange SAE C 4 holes+socket capscrews	
28 - 30461	Flange L.G. 20-35+socket capscrews	
28 - 30462	Flange L.G. 50+socket capscrews	
28 - 30463	Flange L.G. 75+socket capscrews	

If the part number needed is not listed please ask the Flowfit Sales Team

